

JGB MULTI-MARKET SCREEN

DBMagixScreen

23rd Nov. 2011
Document Version: 1.4.10

The screenshot displays the DBMagixScreen application window titled "Bond Best Price". The interface includes a menu bar with options like Standard, Outstanding, Clock, Trade, Close, Preference, and Logout. Below the menu bar, there are several buttons: Yield Calc, Email, Messenger, Information, Customer 1, Customer 2, and Help. The main window shows a table of bond data with columns for ISSUE, JGB, OBY, OFFER, BD, TRADE, and CLS. The table lists various bond issues with their respective values. The user's name "DANIEL LI" and the role "trader" are visible at the bottom of the window.

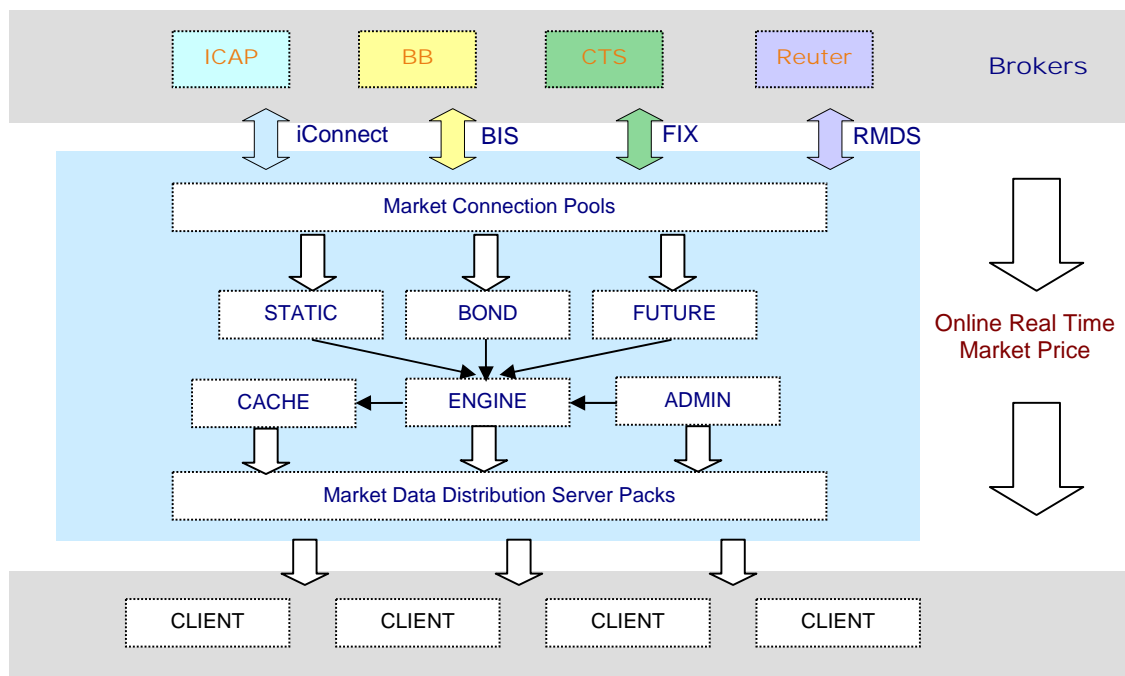
ISSUE	JGB	OBY	OFFER	BD	TRADE	CLS					
070	10	-1.0	0.765	0.80	+2.5	40	0.795	+2.0	10	240	0.795
069	10	+2.0	0.795	0.805	+3.0	10	0.79	+1.5	20	155	0.795
068	10	+2.5	0.795		0.785		+1.5	20	20		0.79
067	10	+3.0	0.795		0.80		+3.5	10	160		0.765
066	10	+3.0	0.805	0.81	+3.5	50	0.805	+3.0	10	155	0.795
064	10	+3.0	0.785	0.79	+3.5	10	0.79	+3.5	10	40	0.755
063	60	+3.0	0.77	0.775	+3.5	5	0.775	+3.5	10	66	0.74
062	10	0	0.725	0.76	+3.5	10					0.725
061	5	+2.5	0.75	0.76	+3.5	20					0.725
060	70	+3.5	0.73	0.735	+4.0	20	0.70	+3.5	10	50	0.695
059	10	+3.0	0.695	0.705	+4.0	30	0.705	+4.0	10	10	0.665
058											0.66
057	10	+3.5	0.70								0.665
055	7	+3.0	0.67								0.64
052	5	0	0.615	0.63	+1.5	10					0.615

1. Introduction	2
2. Solution Concept	2
3. Key features and practical use cases.....	3
Single interface for multiple markets	3
■ Single Terminal accesses multiple broker markets.....	3
■ Capture of best price real timely	3
■ Market indicative data	3
Post-Trade STP solution	3
■ Interface for integration with internal trade management system.....	3
■ Improve trading efficiency by freeing traders from trade booking.....	3
■ Protect business from operational mistakes	3
■ Strengthen real-time risk management.....	3
Common interface for integration with internal systems	3
■ Simplify the multiple brokers protocols.....	3
■ Reduce the maintenance cost dramatically	3
■ Fast to integrate internal systems with broker protocols	3
■ Low cost to develop systems	3
Various functions, user-friendly interface	3
■ All-In-One Screen displays all available prices in one screen.....	3
■ Strengthened bonds filtering function.....	3
■ Fast capture of market movement by easy-to-see color configuration	3
■ Messenger for users' communication.....	3
■ Email implemented for sending closing prices	3
■ BBG style interface shows calculation of yield/price, risk and profit	3
Free of FIX engine	3
■ Save the cost of fix engine purchase.....	3
Free of data distribution infrastructure.....	3
■ Distribution of the internal JGB prices	3
■ Distribution of market and internal news	3
Cost efficient practical use.....	3
■ Reduce the BCP investment by replacing cost-outstanding broker terminals.....	3
■ Free of charge for IT and operation users	3
■ Availability of remote access.....	3
4. System Inside.....	3
Broker markets	3
MAIN SCREEN	4
BEST-PRICE SCREEN	5
CLOSING SCREEN.....	5
POST-TRADE SCREEN	5
CALCULATION OF YIELD/PRICE, RISK and Profit.....	6
PREFERENCE	6
5. Start it.....	7
6. Contact us	7

1. Introduction

With the growth of JGB electronic trading market, to get the best market prices for your clients and to make more efficient prices to market have become the most important strategies in trading business. **dbMagixScreen** is an integrated solution for providing centralized best price discovery for JGB business. The solution collects and aggregates price information from all market sources in real time and disseminates the data to all participant. It also provides price disclosure on all bonds, including depth and trade details and its optional API will allow participants freedom of choice in the integration with internal electronic systems, such as trading system, risk management system, etc.

2. Solution Concept



3. Key features and practical use cases

Single interface for multiple markets

- **Single Terminal** accesses multiple broker markets.
- Capture of best price real timely
- Market indicative data

Post-Trade STP solution

- Interface for integration with internal trade management system.
- Improve trading efficiency by freeing traders from trade booking.
- Protect business from operational mistakes
- Strengthen real-time risk management

Common interface for integration with internal systems

- Simplify the multiple brokers protocols.
- Reduce the maintenance cost dramatically
- Fast to integrate internal systems with broker protocols
- Low cost to develop systems

Various functions, user-friendly interface

- **All-In-One Screen** displays all available prices in one screen.
- Strengthened bonds filtering function
- Fast capture of market movement by easy-to-see color configuration
- Messenger for users' communication
- Email implemented for sending closing prices
- BBG style interface shows calculation of yield/price, risk and profit

Free of **FIX engine**

- Save the cost of fix engine purchase.

Free of data distribution infrastructure

- Distribution of the internal JGB prices
- Distribution of market and internal news

Cost efficient practical use

- Reduce the BCP investment by replacing cost-outstanding broker terminals
- Free of charge for IT and operation users
- Availability of remote access

4. System Inside

Broker markets

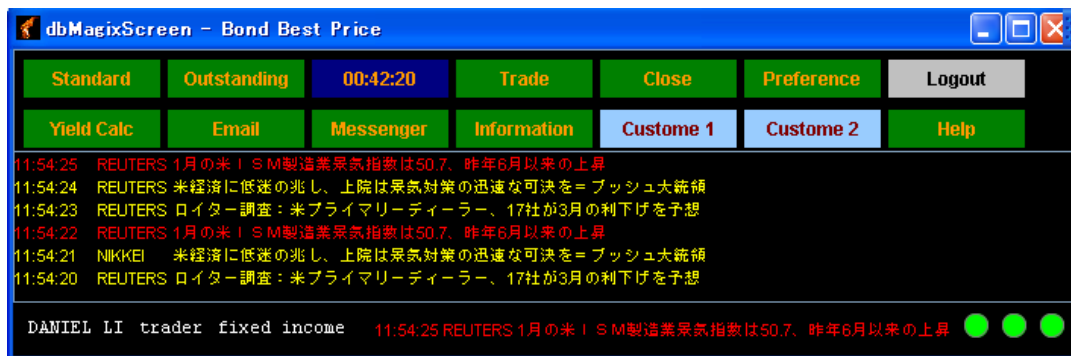
- Japan Bond Trading Co., Ltd.

- ICAP Totan Securities Co., Ltd.
- Central Tanshi Securities Co., Ltd.
- Reuters

JGB Securities

- JGB 2Y, 5Y, 10Y, 15Y, 20Y, 30Y, 40Y
- JGB CPI-Linked
- JGB T-Bills, F-Bills
- JGB When Issued

MAIN SCREEN



1. Standard : Standard BEST-PRICE screen
2. Outstanding : Indicative Information screen *
3. Clock : Market clock with separate screen
4. Trade : Post-Trade Blotter screen *
5. Close : Closing Price screen
6. Preference : Configuration screen
7. YieldCalc : Calculations of Yield/Price, Risk and Profit *
8. Email : Immediate emailing of closing prices, trades *
9. Messenger : Communication tool *
10. Information : System Information Message screen
11. Custome 1 : Available for customizing Standard screen
12. Custome 2 : Available for customizing Standard screen *

* : Components to be delivered are based on customers' environment and requirements

BEST-PRICE SCREEN

ISSUE	OFFER			BID			TRADE				CLS	
JS	JGB 05Y											
070	10	-1.0	0.765	0.80	+2.5	40	B	0.795	+2.0	10	240	0.775
069	10	+2.0	0.795	0.805	+3.0	10	B	0.79	+1.5	20	155	0.775
068	10	+2.5	0.795				B	0.785	+1.5	20	20	0.77
067	10	+3.0	0.795				B	0.80	+3.5	10	160	0.765
066	10	+3.0	0.805	0.81	+3.5	50	B	0.805	+3.0	10	135	0.775
064	10	+3.0	0.785	0.79	+3.5	10	B	0.79	+3.5	10	40	0.755
063	60	+3.0	0.77	0.775	+3.5	5	B	0.775	+3.5	10	85	0.74
062	10	0	0.725	0.76	+3.5	10						0.725
061	5	+2.5	0.75	0.76	+3.5	20						0.725
060	70	+3.5	0.73	0.735	+4.0	20	B	0.73	+3.5	10	50	0.695
059	10	+3.0	0.695	0.705	+4.0	10	B	0.705	+4.0	10	10	0.665
058	50	+3.5	0.695									0.66
057	10	+3.5	0.70									0.665
055	10	+3.0	0.67									0.64
052	5	0	0.615	0.63	+1.5	10						0.615

DANIEL LI trader fixed income 20080325 11:54:30 REUTERS 1月の米 | SM製造業!

CLOSING SCREEN

Issue	Last	Today	Delta	Issue	Last	Today	Delta	Issue	Last	Today	Delta
JB	JGB 10Y										
203	0.395	0.395	0.0	213	0.545	0.555	+1.0	224	0.590	0.585	-0.5
204	0.395	0.395	0.0	214	0.550	0.560	+1.0	225	0.595	0.590	-0.5
205	0.340	0.340	0.0	215	0.550	0.560	+1.0	226	0.600	0.590	-1.0
206	0.420	0.420	0.0	216	0.555	0.565	+1.0	227	0.630	0.625	-0.5
207	0.530	0.535	+0.5	217	0.555	0.565	+1.0	228	0.630	0.625	-0.5
208	0.535	0.540	+0.5	218	0.555	0.565	+1.0	229	0.630	0.625	-0.5
209	0.540	0.550	+1.0	219	0.560	0.565	+0.5	230	0.630	0.625	-0.5
210	0.540	0.550	+1.0	220	0.560	0.565	+0.5	231	0.645	0.640	-0.5
211	0.545	0.555	+1.0	221	0.575	0.570	-0.5	232	0.645	0.640	-0.5
212	0.545	0.555	+1.0	222	0.575	0.570	-0.5	233	0.645	0.640	-0.5
				223	0.595	0.590	-0.5	234	0.675	0.670	-0.5

- View, print and local storing of closing prices
- Email of closing prices

POST-TRADE SCREEN

Trade ID	Exec ...	Trad...	...	Settlement Date	Quantity	...	Net Price	Contract Price	Ar
0106	NEW	1002	0	2008-03-21	1,000,000,000		1,010,668,356.00	1,010,630,000.00	
0106	NEW	1002	0	2008-03-21	2,000,000,000		2,021,336,712.00	2,021,260,000.00	
0102	NEW	1002	0	2008-03-21	2,000,000,000		2,036,300,272.00	2,036,240,000.00	
0102	NEW	1002	0	2008-03-21	500,000,000		507,595,068.00	507,580,000.00	
0102	NEW	1002	0	2008-03-21	1,000,000,000		1,021,062,876.00	1,021,030,000.00	
0102	NEW	1002	1	2008-03-21	5,000,000,000		5,136,678,080.00	5,136,500,000.00	
0106	NEW	1002	0	2008-03-21	2,500,000,000		2,526,670,890.00	2,526,575,000.00	
0106	NEW	1002	0	2008-03-21	1,000,000,000		1,084,544,794.00	1,084,490,000.00	
0106	NEW	1002	0	2008-03-21	1,000,000,000		967,507,260.00	961,710,000.00	
0106	NEW	1002	0	2008-03-21	500,000,000		500,454,246.00	500,420,000.00	
0102	NEW	1002	0	2008-03-21	1,000,000,000		1,020,082,876.00	1,020,050,000.00	

*Post-trade blotters are only available for STP solutions

- View, print and local storing of post-trades
- Email of post-trades.

CALCULATION OF YIELD/PRICE, RISK and Profit

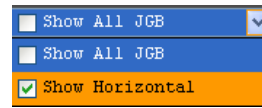
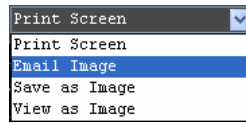
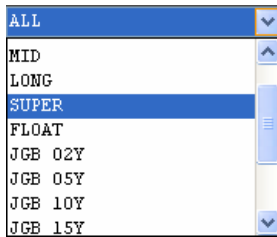
YIELD CALCULATIONS				CASHFLOW ANALYSIS	
SIMPLE YIELD		1.1850		FIRST COUPON DATE	2008/03/20 (1,000M FACE)
COMPOUND YIELD (TRUNC)		1.2080		PAYMENT INVOICE	
(NO TRUNC)		1.208609		PRINCIPAL	1043934
U.S. GOBT EQUIVALENT		1.208390		5 DAYS ACCRUED INT	232
MATURITY		2017/09/20		TOTAL	1044166
SENSITIVITY ANALYSIS				INCOME	
SEMI ADJMOD DURATION		8.764269		REDEMPTION VALUE	1000000
RISK		9.155092		COUPON PAYMENT	161500
CONVEXITY		0.848416		INTEREST	10984
PRICE VALUE OF A	0.01	0.089058		TOTAL	1172484
YIELD VALUE OF A	0.01	0.001123		RETURN	
				GROSS PROFIT	128317
				RETURN	1.225030

*Depending on customers' environment.

- Calculation of yield/price of fixed-income JGB
- Calculation of risk
- Calculation of profit

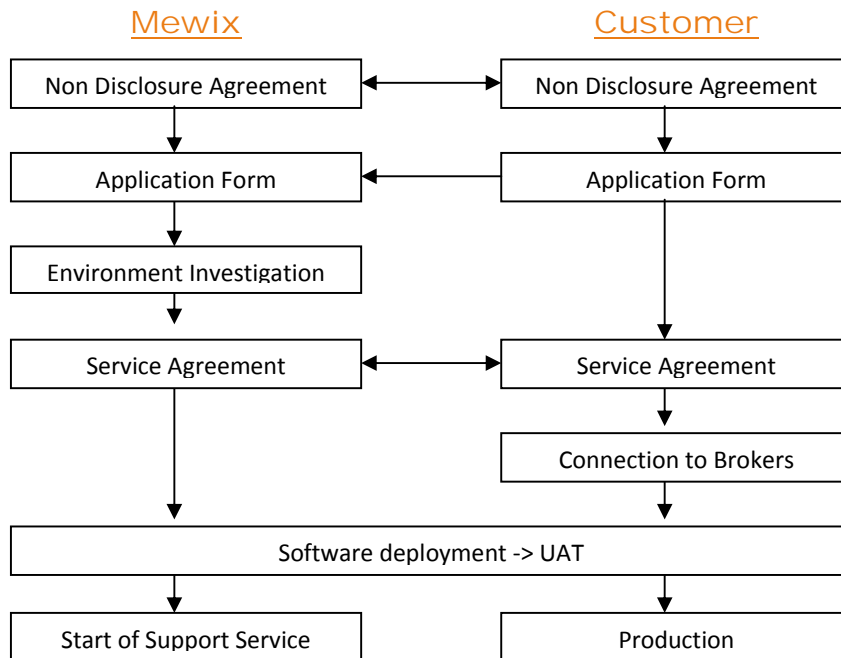
PREFERENCE

- Configuration of bond groups
- Configuration of fonts, colors of screens.
- Printing, view and emailing of screen Image



- Powerful system monitoring tools

5. Start it



6. Contact us

Company : Mewix Inc.
Address : 6F, 1-7-8 Kaigan, Minato-ku, Tokyo 105-0022
Tel : 03-6809-1058
FAX : 03-6809-1743
Email : sales@mewix.com
Homepage : <http://www.mewix.com/>